



# OPERATING MANUAL

## MG75 / MG95

Filter systems

FOR A BETTER WORKBENCH ENVIRONMENT



FILTRONIC AB

Hissgatan 2, Box 2284, 531 02 LIDKÖPING

Tel: +46 510 208 10, Fax: +46 510 201 40

e-mail: [office@filtronic.se](mailto:office@filtronic.se)

[www.filtronic.se](http://www.filtronic.se)

Version 2  
2009.04.28



## Table of contents

1.	Introduction	2
2.	Content	2-3
3.	Safety instruction	4
4.	Put into operation	4
5.	Troubleshooting	5
6.	Maintenance and service	6-7
7.	Technical data	8
8.	Article number	9
9.	Accessories	10
10.	Warranty	11

## 1. Introduction

MG75 and MG95 are mobile filter units for cleaning of both particles and gases. The units are used for filtration of process air from soldering, gluing, cleaning, printing processes etcetera.

## 2. Content

1. Hose connection
2. Main filter
3. Front
4. Power intake with fuse and circuit breaker



Connection details MG75:

- A. Connection hose x 1
- B. Power cord x 1
- C. Quick-connection x 1
- D. Remote control



## 10. Warranty

General conditions according to ORGALIME S 2000.

Filtronic AB guarantees the product for manufacturing failures for a time period of two (2) years on filter units and accessories, consumptions not enclosed. The time is measured from date of invoice.

Only use genuine Filtronic AB consumables and spare parts in order to ensure reliable function and to maintain the unit's warranty. Repairs must be performed by personnel trained by Filtronic AB.

The information given is not binding and does not free the user from his or her responsibility to check the equipment before using it.

Filtronic AB reserves the right to introduce technical changes in the course of product development.

Always contact the supplier before return a product.  
The invoice has to be shown at the time of the complaint.

## 9. Accessories



PF-1200  
Pre filter for the units MG75/MG95, the pre filter is mounted on the unit.



950-3202-ESD  
Mobile unit for MG75 and MG95 with console for extraction arm (unit and arm not included)



3046  
Extraction arm 3046



700-3058  
Remote control (battery) IR

### Connection details MG95:

- A. Hose connection with quick connection x 2
- B. Connection hose x 2
- C. Power cord
- D. Remote control
- E. End cap



### Control panel:

- 5 Push button - decrease
- 6 LED indicator - low airflow
- 7 LED indikator - filter time exceeded
- 8 LED indikator - operation
- 9 Push button - increase
- 10 Intake for remote control



### Remote control:

- 11 Push button - start/stop
- 12 Push button - filter monitoring
- 13 Push button - decrease
- 14 Push button - increase



### 3. Safety instruction

The unit must not be exposed to temperatures exceeding 50° C, open flames or condensated solvents.

Switch off the filter unit when changing filter.

### 4. Put into operation

The best possible gas filtration will be achieved if:

- Process air temperature in the gas filter < 38 °C
- Relative humidity < 60 %
- Gas molecules > 30 g / mol (filtration better with larger molecules)
- Boiling temperature of gas molecules > 0 °C



**NOTE!** The unit may dust some from the main filter after transportation. Make sure the starting of the unit is made in an appropriate room.

Connect the extraction arm och power cord. Connect the remote control (10). Switch on the filter unit (4) and thereafter the remote control (11).

When delivered the filter monitoring is programmed for normal load of the filter (step 3). If you want to change the program, press the button for filter monitoring (12).

Step	Indication	Hours	Application example
1		500	Heavy smoke formation, gluing
2		1000	Assembly work soldering
3		1500	Inspection, repair (set by delivery)
4		2000	Heavy smoke formation *
5		2500	Assembly work soldering *
6		3000	Inspection, repair *

\* Pre filter is used. Art. no. PF-1200

### 8. Article number

Filter system MG75	750-1000-ESD
Micro/Gas filter, Standard	750-2000-ESD
Micro/Gas filter, clean room	750-2002-ESD
Micro/Gas filter, for solvents like MEK	750-2003-ESD
Micro/Gas filter, glue	750-2005-ESD
Micro/Gas filter, ammonia	750-2006-ESD
Micro/Gas filter, CO <sub>2</sub>	750-2007-ESD
Filter system MG95	950-1000-ESD
Mikro/Gas filter, standard	950-2000-ESD
Mikro/Gas filter, clean room	950-2002-ESD
Mikro/Gas filter, for solvents like MEK	950-2003-ESD
Mikro/Gas filter, glue	950-2005-ESD
Mikro/Gas filter, ammonia	950-2006-ESD
Mikro/Gas filter, CO <sub>2</sub>	950-2007-ESD
Pre filter	PF-1200
Quick-connection hose L=1000 mm	700-3040-ESD
Quick-connection hose L=2000 mm	700-3041-ESD
Mobile unit with console for extraction arm	950-3202-ESD
Remote control with cable	700-3057
Remote control (battery) IR	700-3058

## 7. Technical data MG75 / MG95

---

Width x height x depth	460 x 621 x 227 mm
Weight	MG75 -15 kg
	MG95 -18 kg
Sound level at 1 meter	38 - 49 dB(A), depending on the speed of the blower
Voltage	100/240V, 50/60Hz
Effect	100 watt
Glass tube fuse	2 x 6,3 AT, 250 V
Maximum suction capacity	MG75 - 70 m <sup>3</sup> /h
	MG95 - 100 m <sup>3</sup> /h
Micro filter - Separation degree, DOP	>99,97 %
Gas filter - Separation degree	>95 %
Filter monitoring system	Yes
Warranty (excl. filter)	2 years
ESD approval, SP Dno	230-05-0189
CE-guidelines	73/23, 89/336, 89/392, 91/368, 92/31, 93/44, 93/68
RoHS	Yes, from 01.07.2006

## 5. Troubleshooting

---



Do not modify the filter unit. Repairs must be performed by personnel trained by Filtronic AB.

- If the filter unit is out of order, please check that:
  - the electricity supply is connected in a correct way.
  - the fuse 6,3 AT is whole.

- If yellow indicator (7) flashes:

**Recommended filter lifetime is exceeded.**

See "Exchange of main filter" under headline 6 "Maintenance and service".

- If red indicator (6) shines and alarm is heard:

**Inferior suction capacity.**

Restore the alarm by push the "button-increase" (9) at the remote control and switch off the filter unit. Check that extraction arm or nozzle not are covered. Clean if necessary. If the alarm remains, change the main filter. See "Exchange of main filter" under headline 6 "Maintenance and service".

If the alarm not is taken care of, the filter unit will stop within five minutes to protect against overheating.

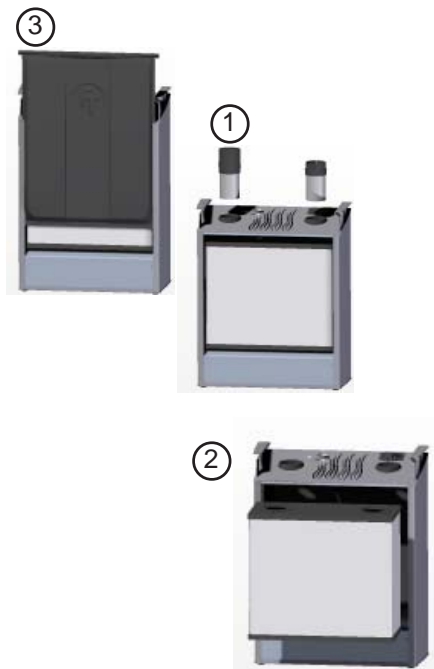
Normal lifetime for a main filter within the electronic industry is 1500 hours.

The main filter should be changed at least once a year to guarantee the separation degree on gases.

## 6. Maintenance and service

Exchange of main filter:

1. Switch off the circuit breaker (4).
2. Pull the front of the unit (3) straight up. Remove it from the unit.
3. Pull the hose connection/connections (1) straight up.
4. Take away the filter (2).
5. NOTE! Mark the new filter with the date of change.
6. Mount the new filter and push down the hose connections as far as possible.
7. Put the front back.



To guarantee a satisfactory function, clean the nozzle, extraction arm and connection hose regularly.

When a new main filter is mounted, the filter monitoring needs to be set to zero. This can be done in two different ways.

Via the control panel:

1. Switch off the circuit breaker (4).
2. Switch on the power at the same time as the buttons (5) and (9) are pressed down. A ready signal sounds and the LED indicators die down.
3. Release the buttons, wait five seconds, switch off the circuit breaker.
4. Wait five seconds, switch on the circuit breaker and set desired capacity.



Via the remote control:

1. Switch off the circuit breaker on the filter unit (4).
2. Switch on the circuit breaker on the filter unit (4) at the same time as the push buttons (13) and (14) on the remote control are pressed down. A ready signal sounds and the LED indicators die down.
3. Release the push buttons, wait five seconds, switch off the circuit breaker (4).
4. Wait five seconds, switch on the circuit breaker (4) and set desired capacity.

